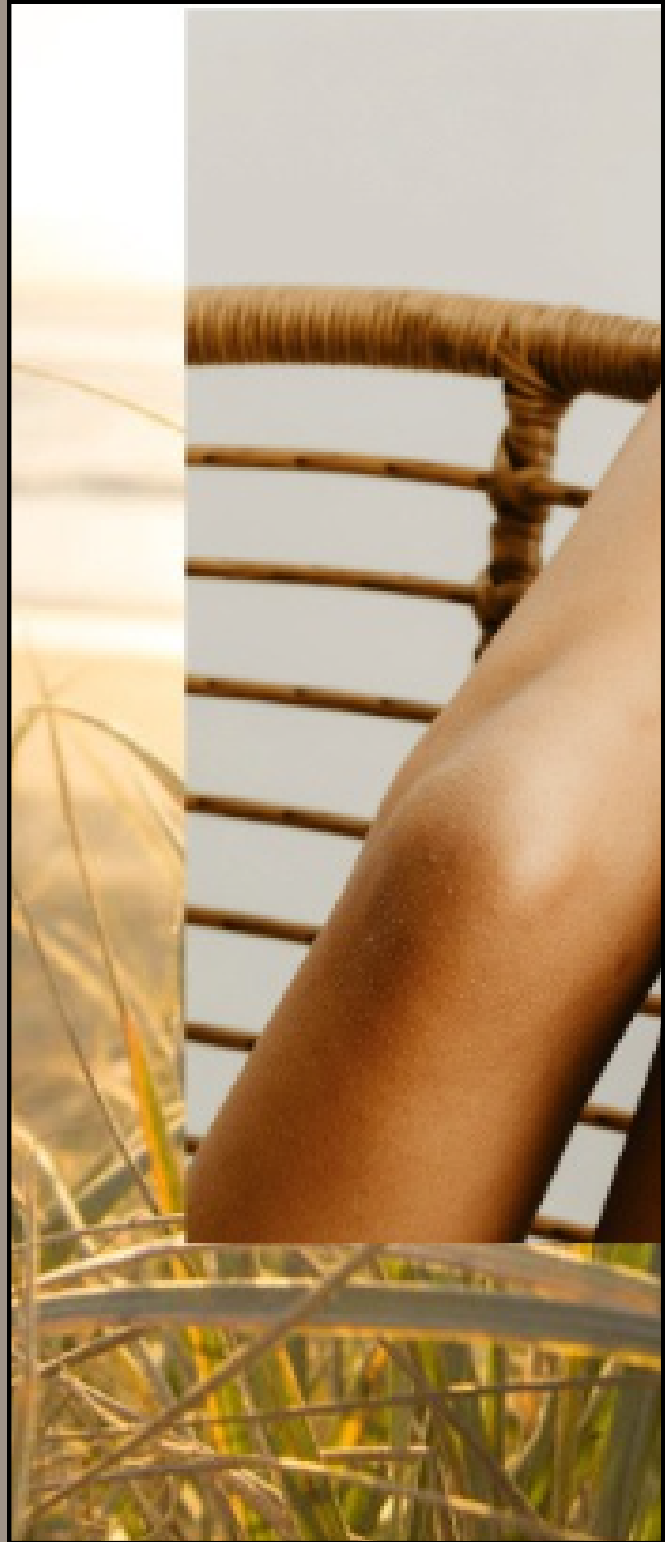


# Aviva Solutions



Product Guide

All Aviva solutions are:  
Oil Free  
Alcohol Free  
Fragrance Free  
Paraben Free  
Nut Free

Hypoallergenic solutions can  
help attract clients



In addition to  
being healthy,  
our solutions  
outperform  
others by  
lasting 7 to 10  
days



Your client  
will have a  
different  
experience  
being  
sprayed with  
Aviva  
Solution





Virtually zero smell  
Dries almost instantly  
Fades like a natural suntan



Now lets talk  
about color

# Aviva solution lines:

Traditional (8-12 hour set time) ~ Hypoallergenic with only 11 ingredients

City Tan Rapid ~ Hypoallergenic with only 11 ingredients

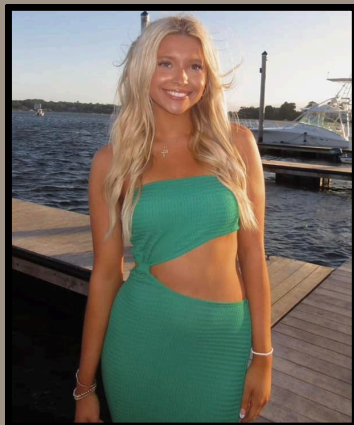
Silk Rapid ~ 12 organic & 12 skincare ingredients added for worlds most organic solution



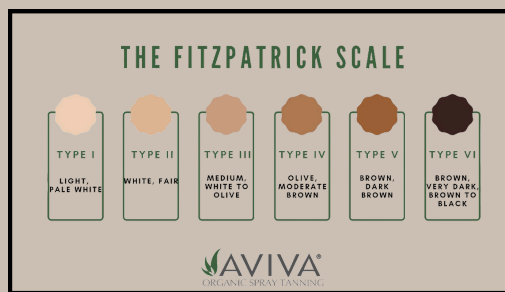
Each line has beautiful colors to choose from making Aviva the most customizable lineup on the market

# Traditional Collection

Offering 3 different customizable solutions with a “traditional” rinse of time of 8 hours. Original for fair skinned clients, Gimme Brown for all, and Winter Glow for the lightest sun kissed glow.







## ORIGINAL:

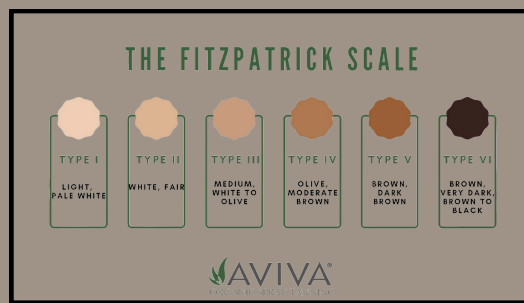
This is the first color Aviva produced and is a fan favorite for light skinned clients who tan reddish-brown naturally in the sun. Fitzpatrick types 1 & 2 who are looking for a natural tan.



Comes in DHA strengths: 8%, 10% & 12%

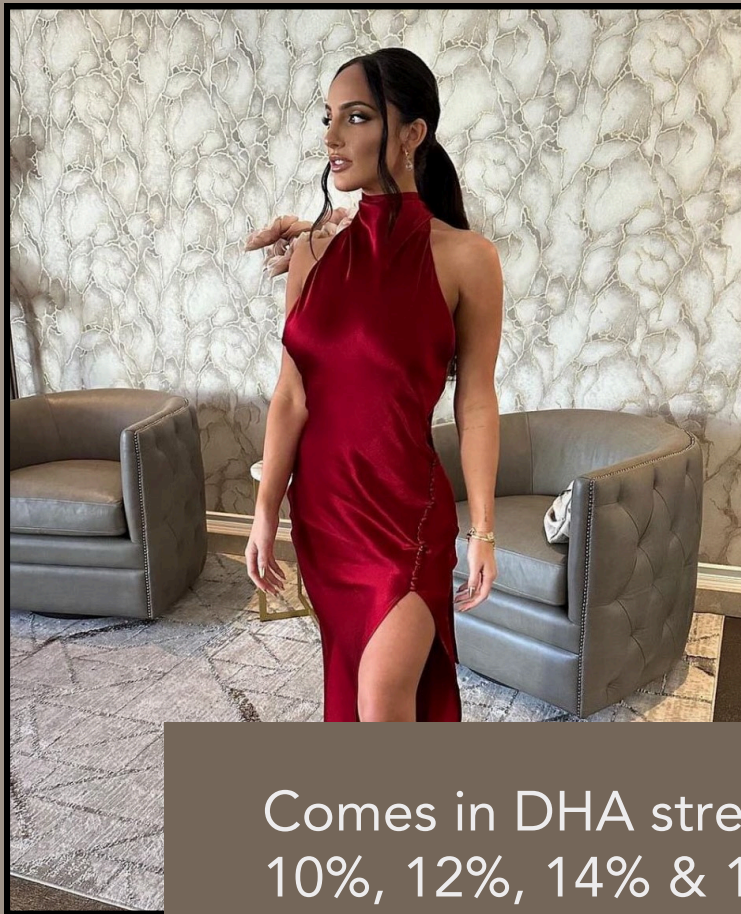


Solution undertone: Cool  
Color description: Golden Pink



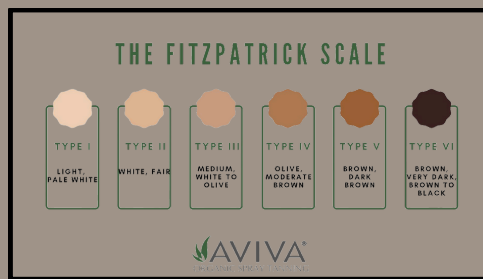
## GIMME BROWN:

This color Aviva produced after clients wanted a more "Brown" tan and looks most natural on skin types 3 and above olive skin. Will provide a dark look for 1's & 2's.



Comes in DHA strengths: 8%, 10%, 12%, 14% & 16%

Solution undertone: Warm  
Color description: Mocha



## WINTER GLOW:

This color is the lightest Aviva produces for clients who want a sun-kissed glow. Fitzpatrick skin types 1 & 2's



Comes in DHA strength: 6%








Solution undertone: Cool

Color description: Golden Pink



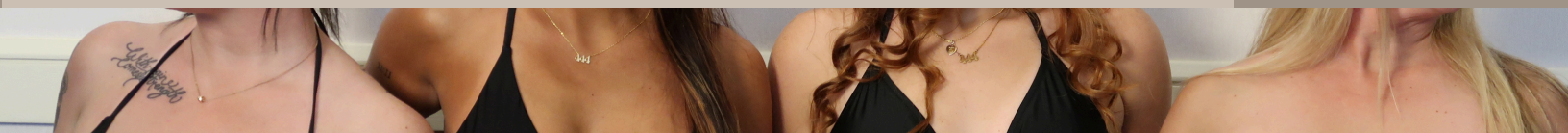
# Rapid Rinse

Rapid Rinse solutions are designed for your clients convenience and stays on their skin for a much shorter amount of time. The longer the solution remains on the skin, the darker the tan will develop.

THE FITZPATRICK SCALE		
		
		
TYPE I LIGHT, PALE WHITE	TYPE II WHITE, FAIR	TYPE III MEDIUM, WHITE TO OLIVE
TYPE IV OLIVE, MODERATE BROWN	TYPE V BROWN, DARK BROWN	TYPE VI BROWN, VERY DARK, BROWN TO BLACK
		
Set Time	Similar to DHA %	Tan Level
1 Hour	6%	Subtle Light Glow
2 Hours	8%	Natural Tan
3 Hours	10%	Dark Tan
4 Hours	12%	Bold Tan
5-6 Hours	14-16%	Intense Tan

\*Quicker rinse off times, client will see their developed tan between 8-12 hours

# Rapid Rinse set time recommendation based on skin type and desired outcome look of tan



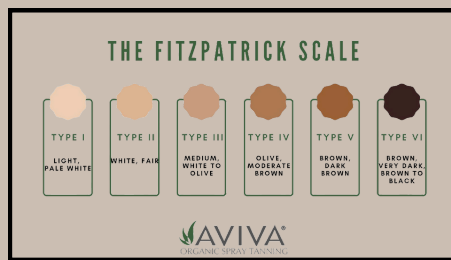
Rapid Rinse Set Times	Subtle	Natural	Bold	Daring
Fitz 1	30 min	1 hr	1.5 hr	2 hr
Fitz 2	1 hr	1.5 hr	2 hr	2.5 hr
Fitz 3	2 hr	2.5 hr	3 hr	3.5 hr
Fitz 4	2.5 hr	3 hr	3.5 hr	4 hr
Fitz 5	3 hr	3.5 hr	4 hr	5 hr
Fitz 6	4.5 hr	5 hr	5.5 hr	6 hr

# City Tan Collection

## Rapid Rinse Solutions



The City Tan Collection boasts 4 beautiful color bases to provide customizable options for your clients. With only 11 ingredients, these solutions provide a clean, hypo-allergenic experience with the convenience of quick rinse off times!



## City Tan Hollywood Rapid Rinse Solution: 1-6 hrs

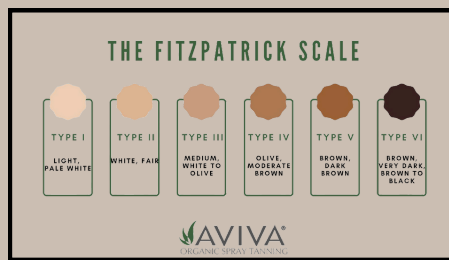
Hollywood is the lightest Rapid Rinse in our City Tan Collection with its golden honey color.  
Fitzpatrick types 1, 2, 3 & 4



Solution undertone: Cool

Color description: Golden honey





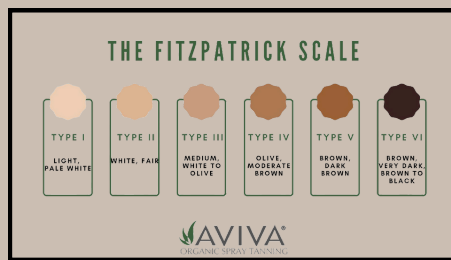
## City Tan Honolulu Rapid Rinse Solutions: 1-6 hrs

Honolulu is the most popular Rapid Rinse in our City Tan Collection with its universal fresh off the beach color. Fitzpatrick types 1, 2, 3, 4, 5 & 6



Solution undertone: Warm

Color description: Cinnamon Brown



## City Tan Vegas Rapid Rinse Solutions: 1-6 hrs

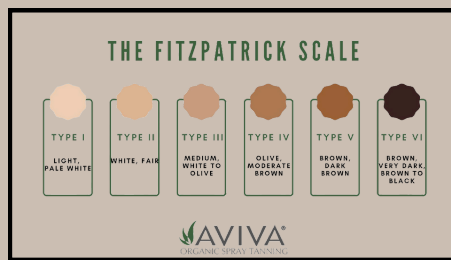
Vegas is the darkest Rapid in our City Tan Collection with it's violet plum color that contrasts with all skin types for a deep tan look. Fitzpatrick types 1, 2, 3, 4, 5 & 6



Solution undertone: Warm

Color description: Violet/Plum Brown





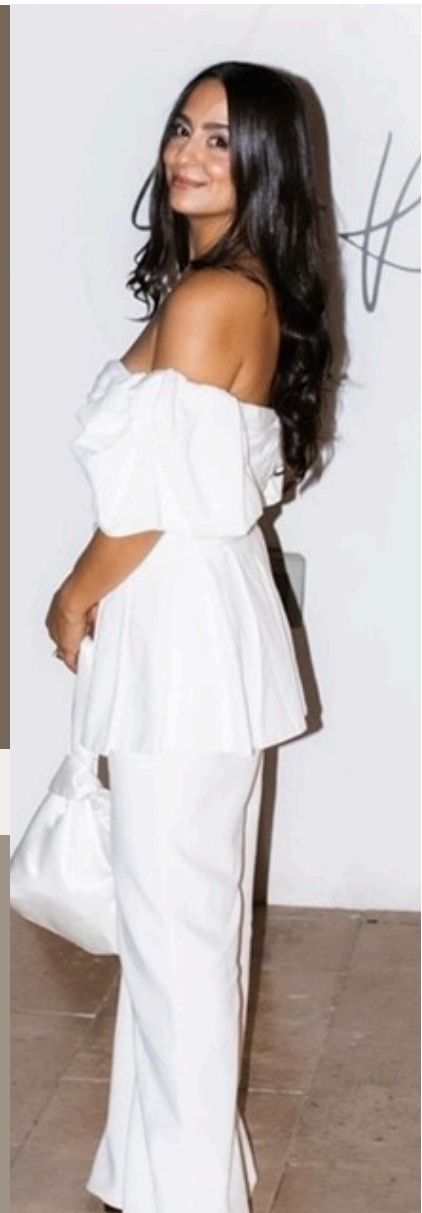
## City Tan Miami Rapid Rinse Solutions: 1-6 hrs

Miami is the only non universal solution in our City Tan Collection with it's ruby brown color that compliments darker skin. Fitzpatrick types 3, 4, 5 & 6

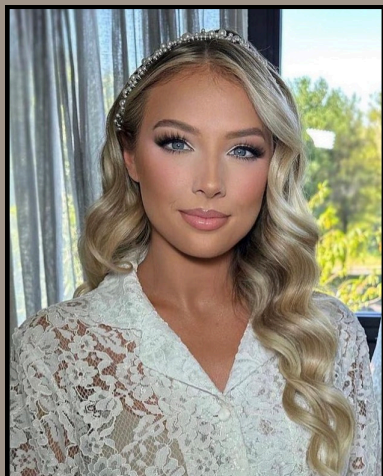


Solution undertone: Cool

Color description: Ruby



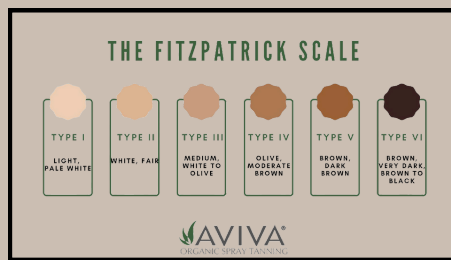
# Silk Organic Collection



The world's most organic sunless solution with amazing skincare ingredients that your clients recognize and love. All while delivering the most silky smooth spray tan of their lives!

Certified organic  
Aloe Vera, Rose  
Water, Orange  
Blossom,  
Glycerin, Green  
Tea, Acai Berry,  
Coconut Milk,  
Guarana Seed,  
Lavender Petal,  
Hibiscus Petal,  
Baobab Fruit and  
Red Beet Root.

Hyaluronic Acid,  
Resveratrol,  
CoQ10, Squalane,  
Witch Hazel,  
Glycolic Acid,  
Vitamin B3,  
Palmitoyl  
Tripeptide-5,  
Hydrolyzed Silk  
Peptide, Caffeine,  
Vitamin C, and  
Panthenol  
Provitamin B5.



## Silk Aruba

Created in the brown base family with a true cool caramel color. Most natural match for Fitzpatrick types 1, 2, 3 & 4.

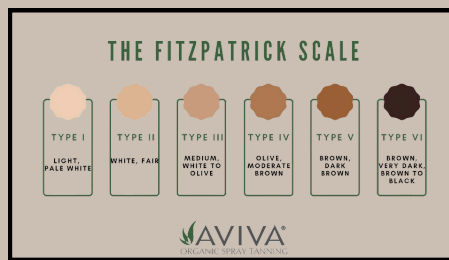


Silk Island Collection

Rapid Rinse Solutions: 1-6 hrs

Solution undertone: Cool

Color description: Caramel Brown



## Silk Bali

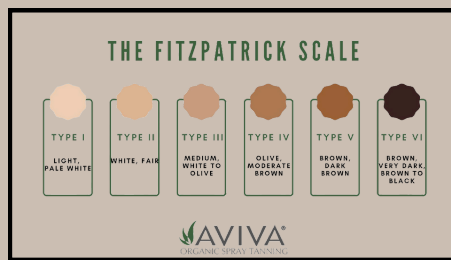
Bali is an ash based solutions formulated for dark results. Most natural match for Fitzpatrick types 1, 2, & 3's. Dark tan for 4's and above.



Silk Island Collection  
Rapid Rinse Solutions: 1-6 hrs

Solution undertone: Cool  
Color description: Taupe





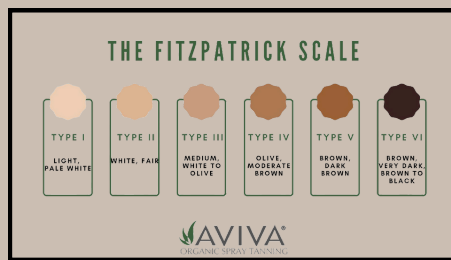
## Silk Bermuda

Bermuda is a green based solution that provides natural match for Fitzpatrick types 3 & 4 with warm undertones in their skin. Can use on 1 & 2's with cool pink undertones, green will diminish the pink appearance in the skin.



Silk Island Collection  
Rapid Rinse Solutions: 1-6 hrs

Solution undertone: Warm  
Color description: Olive



## Silk Cayman

Cayman yellow base solution that provides a deep beautiful bronzed result. Looks most natural on Fitzpatrick skin types 1, 2, & 3

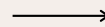


Silk Island Collection

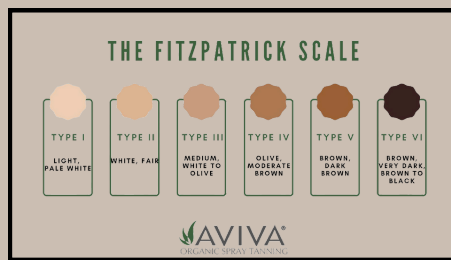
Rapid Rinse Solutions: 1-6 hrs

Solution undertone: Warm

Color description: Butterscotch







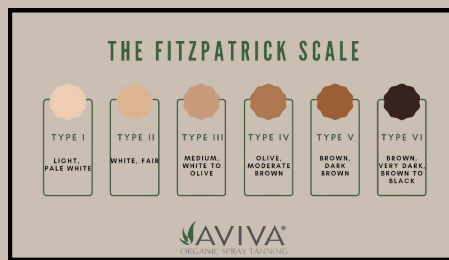
## Silk Capri

Capri is a brown base solution with a neutral pure brown color making it our most universal solution. All Fitzpatrick skin types looking for a true brown result.



Silk Island Collection  
Rapid Rinse Solutions: 1-6 hrs

Solution undertone: Neutral  
Color description: Pure brown



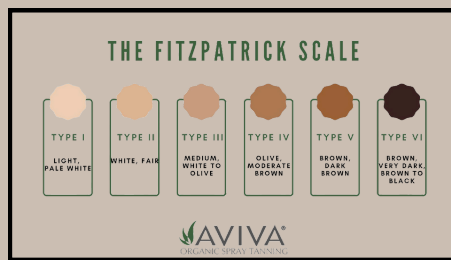
## Silk Ibiza

Ibiza is a violet base solution that will contrast with all skin types and produce a bold tan. Violet will diminish the look of warm yellow undertones in skin. All Fitzpatrick skin types looking for a dark/bold result.



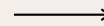
Silk Island Collection  
Rapid Rinse Solutions: 1-6 hrs

Solution undertone: Cool  
Color description: Orchid



## Silk Hawaii

Hawaii is the same exact color as City Tan Honolulu just in the Silk formula. Fitzpatrick types 1, 2, 3, 4, 5 & 6. Looks most natural on type 3's and above.

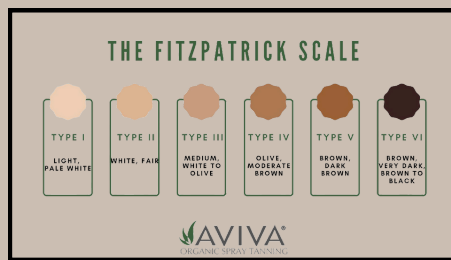


Silk Island Collection

Rapid Rinse Solutions: 1-6 hrs

Solution undertone: Warm

Color description: Cinnamon Brown



## Silk Samoa

Samoa is a brown base solution that provides a rich cool brown result. Looks most natural on Fitzpatrick skin types 1, 2, & 3. Type 4's and above looking for a dark tan.

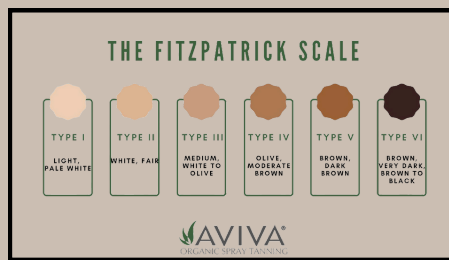


Silk Island Collection  
Rapid Rinse Solutions: 1-6 hrs



Solution undertone: Cool  
Color description: Espresso





## Silk Santorini

Santorini is our second ash base but Santorini has a bold warmth characteristic. Provides one of our darkest tan level result. Fitzpatrick types 1, 2, 3, 4, 5 & 6. Looks most natural on type 3's and above.



Silk Island Collection  
Rapid Rinse Solutions: 1-6 hrs

Solution undertone: Warm  
Color description: Sable

# Mixing Guides



You can create custom colors  
and %'s

## Mixing for %:

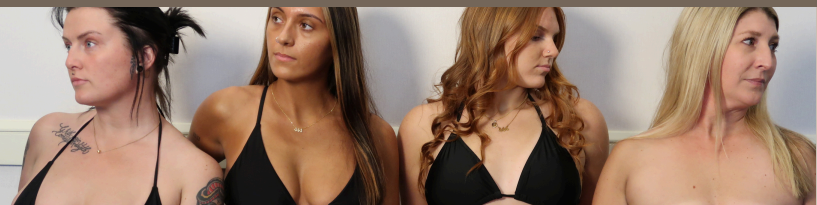
To either create a custom % or to make a % you don't have in stock.

Pour an even amount of solutions containing different DHA %'s.

1oz 8%	+	1oz 10%	= 9%
1oz 8%	+	1oz 12%	= 10%
1oz 10%	+	1oz 12%	= 11%
1oz 12%	+	1oz 14%	= 13%
1oz 14%	+	1oz 16%	= 15%



# Mixing Guides



You can create custom colors  
and %'s

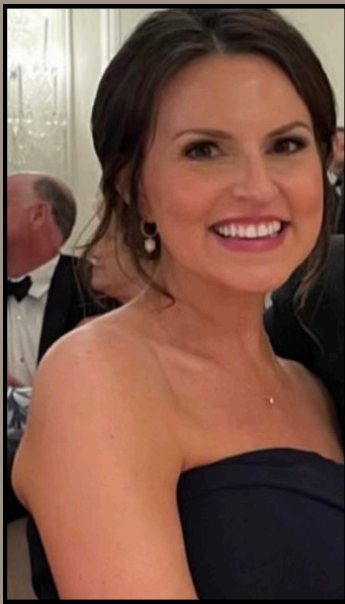
## Mixing for color:

Create beautiful custom undertones by mixing equal parts of any Rapid Rinse solutions. The City Tan line and the Silk line can even be mixed together. This is where your artistry will come in and you can make blends for your clients.

1oz Hollywood	+	1oz Honolulu
1oz Hollywood	+	1oz Vegas
1oz Miami	+	1oz Hollywood
1oz Bali	+	1oz Ibiza
1oz Aruba	+	1oz Hawaii
1oz Capri	+	1oz Bermuda

# Custom mixes

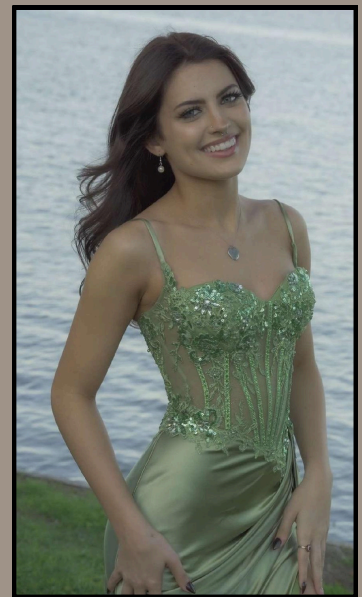
Aruba/Hawaii



Hollywood/Honolulu



Hollywood/Vegas



Bermuda/Ibiza



Original 8%/Original 10%



Winter Glow/Gimme  
Brown 8%

